

Clarke®



This product is only suitable
for well insulated spaces or occasional use

FAN HEATER

MODEL NO: DEVIL 1000/2000

PART NO: 6935460

OPERATING & MAINTENANCE INSTRUCTIONS

UK
CA | CE



ORIGINAL INSTRUCTIONS

GC 05/25 Rev 1

INTRODUCTION

Thank you for purchasing this CLARKE Heater.

Before attempting to use this product, please read this manual thoroughly and follow the instructions carefully. In doing so you will ensure the safety of yourself and that of others around you, and you can look forward to your purchase giving you long and satisfactory service.

Please keep these instructions in a safe place for future reference.

GUARANTEE

This product is guaranteed against faulty manufacture for a period of 12 months from the date of purchase. Please keep your receipt which will be required as proof of purchase.

This guarantee is invalid if the product is found to have been abused or tampered with in any way, or not used for the purpose for which it was intended. Faulty goods should be returned to their place of purchase, no product can be returned to us without prior permission. This guarantee does not effect your statutory rights.

SPECIFICATIONS

Model Number	Devil 1000/2000
Part Number	6935460
Weight	1.1 kg
Dimensions (W x D x H)	251 x 122 x 243 mm
Rated input Current	7.96A
Supply Voltage	230V/50 Hz
Fuse Rating	13A
Insulation Class	IP20
Max Heat Output	2000W (6824.28 BTU)
Safety device	Thermal cut-out
Duty Cycle	S1 (continuous)

THE FOLLOWING TABLE ADDRESSES THE INFORMATION REQUIREMENTS OF REG.2015/1188

Contact details	Name and address of the manufacturer or its authorized representative: Clarke International, Sealand House, Hemnall St, Epping CM16 4LJ					
Model identifier: DEVIL 1000/2000						
Item	Symbol	Value	Unit	Item	Unit	
Heat output				Type of heat output/room temperature control (select one)		
Nominal heat output	P _{nom}	1.800-2.000	kW	Single stage heat output, no temperature control	No	
Minimum heat output (indicative)	P _{min}	0.900	kW	Two or more manual stages, no temperature control	No	
Maximum continuous heat output	P _{max,c}	2.000	kW	With mechanical thermostat temp control	Yes	
Power consumption				With electronic temperature control	No	
In off mode	P _o	0.00	W	Electronic temperature control with day timer	No	
In standby mode	P _{sm}	N/A	W	Electronic temperature control with week timer	No	
In idle mode	P _{idle}	0.00	W	Other control options (multiple selections possible)	No	
In network standby	P _{nsm}	N/A	W		Room temperature control with presence detection	No
Standby mode with display information or status			No		Room temperature control with open window detection	No
Seasonal space heating energy efficiency in active mode	η _{s,on}	85.0	%		Distance control option	No
					Adaptive start control	No
				Working time limitation	No	
				black bulb sensor	No	
				self-learning functionality	No	
				control accuracy	No	
This product is only suitable for well insulated spaces or occasional use.						

SAFETY PRECAUTIONS

Make sure that you read, understand and comply with the following.



WARNING: THIS PRODUCT IS ONLY SUITABLE FOR WELL INSULATED AREAS AND IS NOT DESIGNED TO BE THE PRIMARY HEAT SOURCE.

CAUTION: PLEASE NOTE THAT LEAD MAY BE FOUND WITH THE FUNCTIONAL OR STRUCTURAL COMPONENTS OF THIS PRODUCT.

SAFE WORKING PRACTICE

1. **DO NOT** operate the heater when you are tired or under the influence of alcohol, drugs or intoxicating medication.
2. **DO NOT** stand on the heater.
3. **DO NOT** use the heater with wet hands or when there is water on the power cable.
4. Turn the heater off when not in use and keep it in a safe, dry location.
5. The heater is designed to heat enclosed areas, such as workshops and other industrial areas. **DO NOT** use the heater for any other function. It is not suitable for drying clothes or laundry.

ELECTRICAL SAFETY

1. Electrical appliances must match the power outlet. **NEVER** modify the plug in any way. **DO NOT** use adaptor plugs with earthed (grounded) appliances. Correct plugs and outlets will reduce the risk of electric shock.
2. **DO NOT** abuse the electrical cable. **NEVER** use the cable for pulling or unplugging the heater. Keep the cable away from sources of heat, oil, sharp edges or moving parts. Damaged or tangled cables increase the risk of electric shock.
3. Keep the power cable well away from machines and ensure an adequate electrical supply is close at hand so that the operation is not restricted by the length of the cable.
4. **ALWAYS** disconnect from the power supply before moving the heater or performing any cleaning or maintenance tasks.
5. Inspect the mains cable regularly for signs of damage. **DO NOT** use if it is damaged, and **ALWAYS** keep it away from the source of heat.
6. Check the heater for damage before use. Any damage should be properly repaired or the part replaced. If in doubt, **DO NOT** use. Consult your local CLARKE dealer.

POSITIONING



WARNING: DO NOT USE THE HEATER NEAR FLAMMABLE MATERIAL, LIQUIDS, SOLIDS, GASES OR COMPRESSED GAS CYLINDERS ETC.

1. This heater is designed for indoor use only.
2. **DO NOT** use this heater in small rooms when they are occupied by persons not capable of leaving the room on their own unless constant supervision is provided.
3. **DO NOT** use this heater in the immediate surrounds of a bath, a shower, a swimming pool or wet surfaces.
4. **NEVER** place the heater against or near any surface such as a wall, door, curtains, furniture or combustible material etc. Allow at least 1 metre clearance.
5. **DO NOT** place the heater on a raised surface or anywhere where it could topple over. **ALWAYS** use on a horizontal and stable surface.
6. **ALWAYS** ensure that the grille cannot be blocked or covered.
7. **DO NOT** operate fan heaters in explosive atmospheres such as in the presence of flammable liquids, gasses or dust such as in a paint spray booth or any explosive environment. Electric motors create sparks which may ignite dust or fumes.
8. This heater can be used by children aged 8 and above and persons with reduced physical, sensory and mental capabilities or lack of knowledge if they have been given instruction concerning the use of appliance in a safe way and understand the hazards.
9. Children less than 8 years should be kept away unless continuously supervised.
10. Children should **NOT** play with this appliance and animals should be kept away at all times.

OPERATION

1. The heater must only be used by people who have read these instructions and have been trained in its use.
2. **DO NOT** use if dropped.
3. **DO NOT** use if there is visible signs of damage.
4. **DO NOT** obstruct the air inlet and outlet sections of the heater.
5. **DO NOT** cover the heater with anything that could restrict the airflow.
6. **DO NOT** touch the heater grille when first switched off, as this will be hot and will take time to cool.
7. **DO NOT** get the heater wet or use in areas of high condensation.




8. **DO NOT** use this heater with a programmable timer used to switch it on automatically.
9. **DO NOT** leave the heater unattended.

SERVICE & REPAIRS

1. If necessary, have your heater repaired by a qualified person using identical replacement parts. This will ensure that the safety of the product is maintained.

SAFETY SYMBOLS

These safety symbols may appear on the heater or its packaging.

	Hot Surface, DO NOT Touch		DO NOT Cover
	Indoor use only	DO NOT COVER	

ENVIRONMENTAL RECYCLING POLICY



Through purchase of this product, the customer is taking on the obligation to deal with the WEEE in accordance with the WEEE regulations in relation to the treatment, recycling & recovery and environmentally sound disposal of the WEEE.

In effect, this means that this product must not be disposed of with general household waste. It must be disposed of according to the laws governing Waste Electrical and Electronic Equipment (WEEE) at a recognised disposal facility.

ELECTRICAL CONNECTIONS



WARNING: READ THESE ELECTRICAL SAFETY INSTRUCTIONS THOROUGHLY BEFORE CONNECTING THE PRODUCT TO THE MAINS SUPPLY.

Before switching the product on, make sure that the voltage of your electricity supply is the same as that indicated on the rating plate. This product is designed to operate on 230VAC 50Hz. Connecting it to any other power source may cause damage.

If the fuse cover becomes lost or damaged, the plug must not be used until a suitable replacement is obtained.

If the plug has to be changed, it should be cut off and a replacement fitted, following the wiring instructions shown below. The old plug must be disposed of safely, as insertion into a mains socket could cause an electrical hazard.

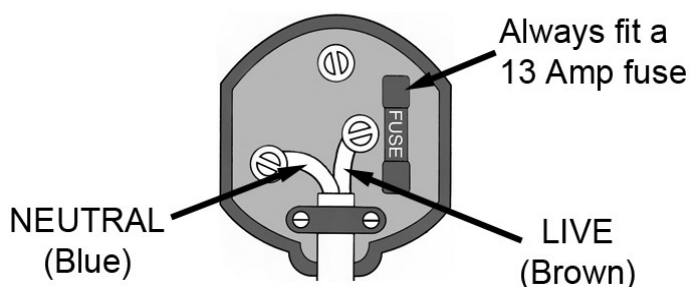


WARNING: THE WIRES IN THE POWER CABLE OF THIS PRODUCT ARE COLOURED IN ACCORDANCE WITH THE FOLLOWING CODE: BLUE = NEUTRAL BROWN = LIVE

If the colours of the wires in the power cable of this product do not correspond with the markings on the terminals of your plug, proceed as follows.

- The blue wire must be connected to the terminal marked **N**.
- The brown wire must be connected to the terminal marked **L**.

The plug must be BS1363/A approved



Make sure that the outer sheath of the cable is firmly held by the clamp

If in any doubt, consult a qualified electrician. **DO NOT** attempt any repairs yourself.



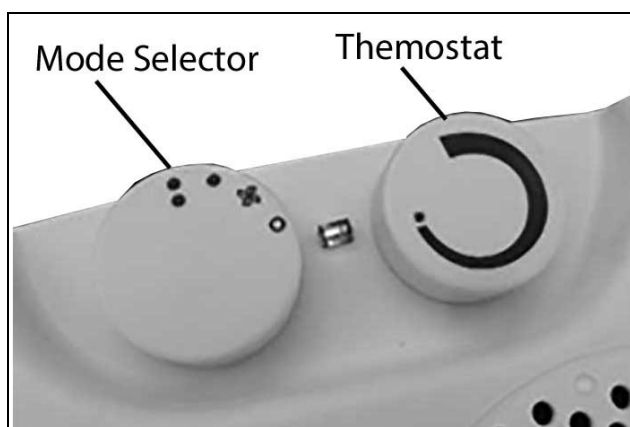
This symbol indicates that this is a Class II product, and does not require an earth connection.

OPERATION



WARNING: FOR SAFE OPERATION OF THIS HEATER IT IS ESSENTIAL TO READ THESE INSTRUCTIONS BEFORE USE.

1. Stand the heater on a firm, level surface and following all safety precautions, connect to a suitable power supply.
 - The LED will be illuminated when power is connected.
2. Set the mode selector to one of the 3 settings. This turns on the:
 - 1st position = Fan
 - 2nd position = 1kW
 - 3rd position = 2kW
3. Set the temperature using the other knob (thermostat), using the fully variable setting from Min to Max as required.



THERMOSTATIC PROTECTION

The heater has a thermal cut out to prevent it from overheating.

If the temperature of the front grille gets too high the thermal cutout will turn off the heater.

- When the thermal cutout is operated it is necessary to wait for the temperature to drop and unplug the unit before plugging in again before it will work again. (This requires a user interaction for greater safety.)

CLEANING & MAINTENANCE & FAULT FINDING

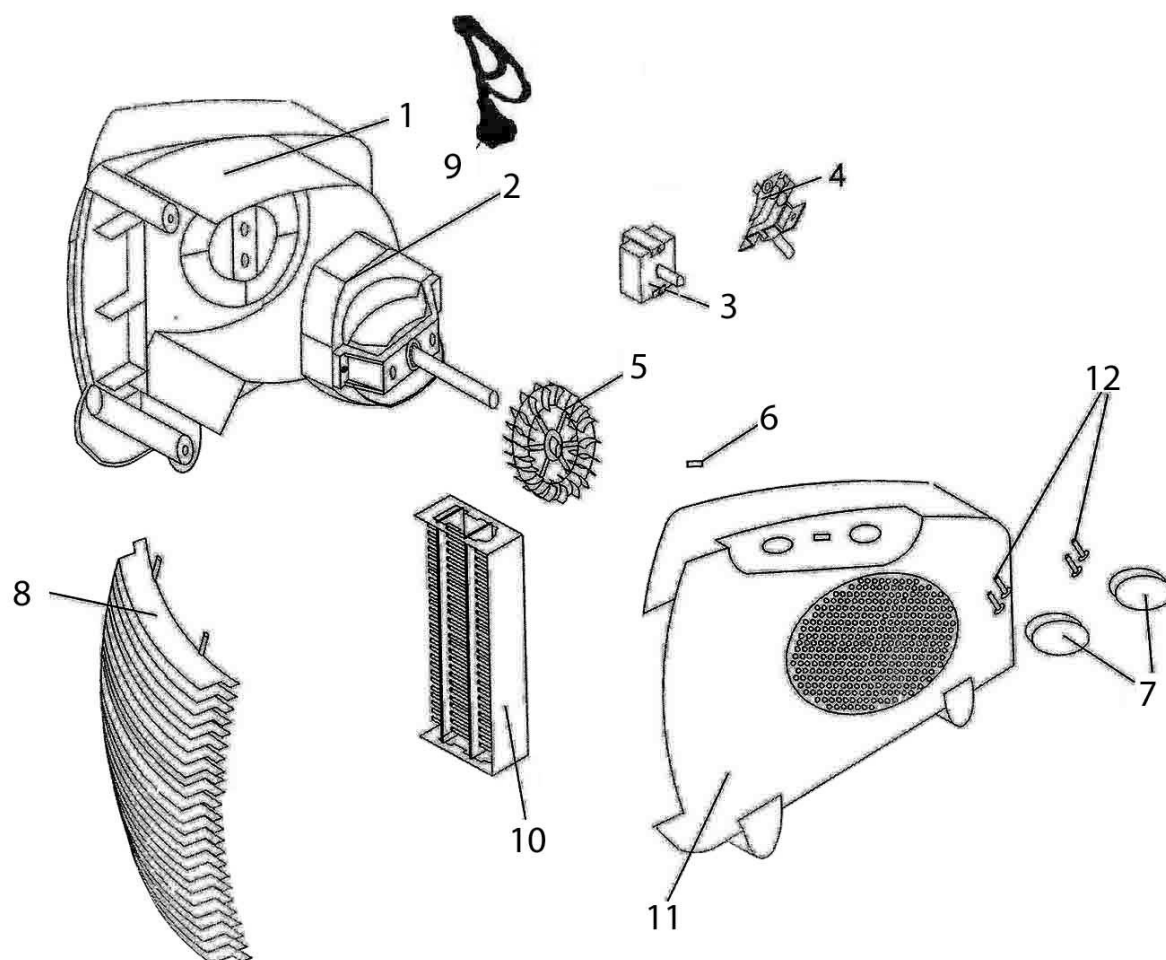
Always allow the heater to cool down for at least 15 minutes and disconnect it from the mains supply before performing any maintenance tasks.

1. Inspect the power cable for damage. Undue heat will cause the cable to stiffen and crack. If this is found, have the cable replaced. Check your cable routing and ensure it is well away from the heat source.
2. Should the heater become dirty, disconnect it from the power supply and wipe with a clean damp cloth. **DO NOT** use abrasive cleaners. Take care that no moisture enters the heater.
3. Unblock the air intakes with a dry brush or blow out with compressed air if available. If using compressed air, **ALWAYS** wear eye protection.

FAULTFINDING

SYMPTOM	PROBLEM	SOLUTION
Heater does not operate, although plugged in and switched on.	Plug is loose/bad connection.	Remove the plug & check the connection of the plug and socket.
	Fuse blown.	Replace if necessary and investigate the cause. If the fuse blows repeatedly, consult your CLARKE dealer.
	No power at the socket outlet.	Insert the plug into a suitable live socket.
	Thermal safety switch is disabling the heater.	Ensure heater is able to cool down. If the switch does not re-set, consult your CLARKE dealer.

PARTS DIAGRAM



No	Description
1	Back cover
2	Motor
3	Switch
4	Thermostat
5	Fan
6	Pilot lamp shade

No	Description
7	Knob
8	Grille
9	Power cable
10	Heating element
11	Front cover
12	Screw

A selection of suitable extension leads & plugs is available from your nearest CLARKE dealer, for further information, contact your nearest dealer, or telephone CLARKE International Sales department on 01992 565300.

DECLARATIONS OF CONFORMITY



Hemnal Street, Epping, Essex, CM16 4LG

DECLARATION OF CONFORMITY

This is an important document and should be retained.

We hereby declare that this product(s) complies with the following legislation:

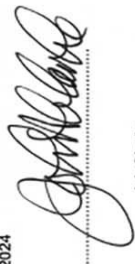
The Ecodesign for Energy-Related Products Regulations 2010
The Electromagnetic Compatibility Regulations 2016
The Electrical Equipment (Safety) Regulations 2016
The Restriction of the Use of Certain Hazardous Substances in Electrical and Electronic Equipment Regulations 2012

The following standards have been applied to the product(s):

EN 60335-1:2012+A11:2014+A13:2017+A1:2019+A2:2019+A14:2019+A15:2021, IEC 62321-5:2013,
EN 60335-2-30:2009+A11:2012+A1:2020+A12:2020, EN 60675:1995+A1:1998+A2:2018+A11:2019,
EN 61000-3-3:2013+A1:2019+A2:2021, EN IEC 55014-1:2021, IEC 62321-3-1:2013, EN 62233:2008,
EN IEC 61000-3-2:2019+A1:2021, EN IEC 55014-2:2021, IEC 62321-7-1:2015, IEC 62321-7-2:2017,
IEC 62321-4:2013+A1:2017, IEC 62321-8:2017, EN 50564:2011

The technical documentation required to demonstrate that the product(s) meet(s) the requirement(s) of the aforementioned legislation has been compiled and is available for inspection by the relevant enforcement authorities.

The UKCA mark was first applied in: 2024

Product Description: Space Heater
Model Number(s): DEVIL 1000/2000
Serial/Batch Number: Refer to product/packaging label
Date of Issue: 31/10/2024
Signed: 

J.A. Clarke
Director

DEVIL 1000-2000 UKCA Clarke DOC 103124

Page 1 of 1



Fitzwilliam Hall, Fitzwilliam Place, Dublin 2

DECLARATION OF CONFORMITY

This is an important document and should be retained.

We hereby declare that this product(s) complies with the following legislation:

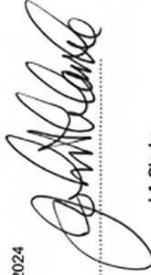
Ecodesign Directive
Electromagnetic Compatibility Directive
Low Voltage Directive
Restriction of Hazardous Substances (RoHS) Directive

The following standards have been applied to the product(s):

EN 60335-1:2012+A11:2014+A13:2017+A1:2019+A2:2019+A14:2019+A15:2021, IEC 62321-5:2013,
EN 60335-2-30:2009+A11:2012+A1:2020+A12:2020, EN 60675:1995+A1:1998+A2:2018+A11:2019,
EN 61000-3-3:2013+A1:2019+A2:2021, EN IEC 55014-1:2021, IEC 62321-3-1:2013, EN 62233:2008,
EN IEC 61000-3-2:2019+A1:2021, EN IEC 55014-2:2021, IEC 62321-7-1:2015, IEC 62321-7-2:2017,
IEC 62321-4:2013+A1:2017, IEC 62321-8:2017, EN 50564:2011

The technical documentation required to demonstrate that the product(s) meet(s) the requirement(s) of the aforementioned legislation has been compiled and is available for inspection by the relevant enforcement authorities.

The CE mark was first applied in: 2024

Product Description: Space Heater
Model Number(s): DEVIL 1000/2000
Serial/Batch Number: Refer to product/packaging label
Date of Issue: 31/10/2024
Signed: 

J.A. Clarke
Director

DEVIL 1000-2000 CE Clarke DOC 103124

Page 1 of 1

A SELECTION FROM THE VAST RANGE OF

Clarke®

QUALITY PRODUCTS



AIR COMPRESSORS
From DIY to industrial, Plus air tools, spray guns and accessories.

GENERATORS
Prime duty or emergency standby for business, home and leisure.

POWER WASHERS
Hot and cold, electric and engine driven - we have what you need

WELDERS
Mig, Arc, Tig and Spot. From DIY to auto/industrial.

METALWORKING
Drills, grinders and saws for DIY and professional use.

WOODWORKING
Saws, sanders, lathes, mortisers and dust extraction.

HYDRAULICS
Cranes, body repair kits, transmission jacks for all types of workshop use.

WATER PUMPS
Submersible, electric and engine driven for DIY, agriculture and industry.

POWER TOOLS
Angle grinders, cordless drill sets, saws and sanders.

STARTERS/CHARGERS
All sizes for car and commercial use.



PARTS & SERVICE:

0208 988 7400

Parts Enquiries
Parts@clarkeinternational.com

Servicing & Technical Enquiries
Service@clarkeinternational.com

SALES: UK 01992 565333 or Export 00 44 (0)1992 565335

Clarke® INTERNATIONAL Hemnall Street, Epping, Essex CM16 4LG
www.clarkeinternational.com